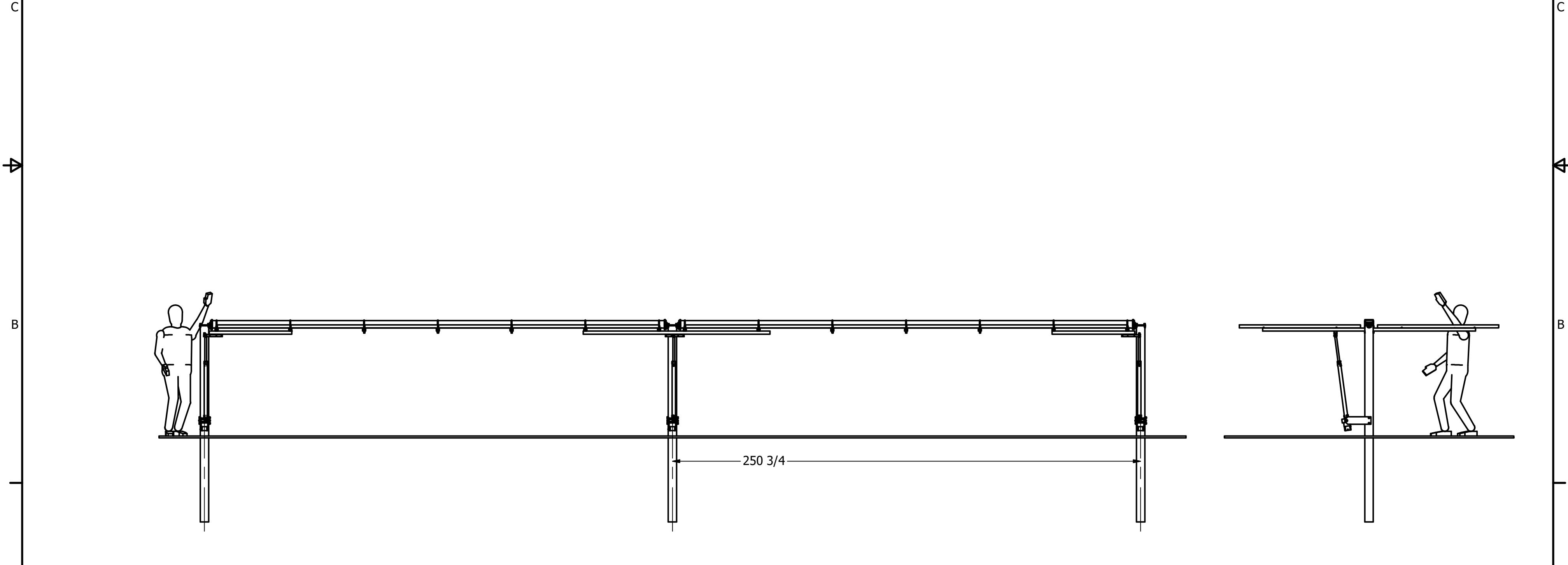
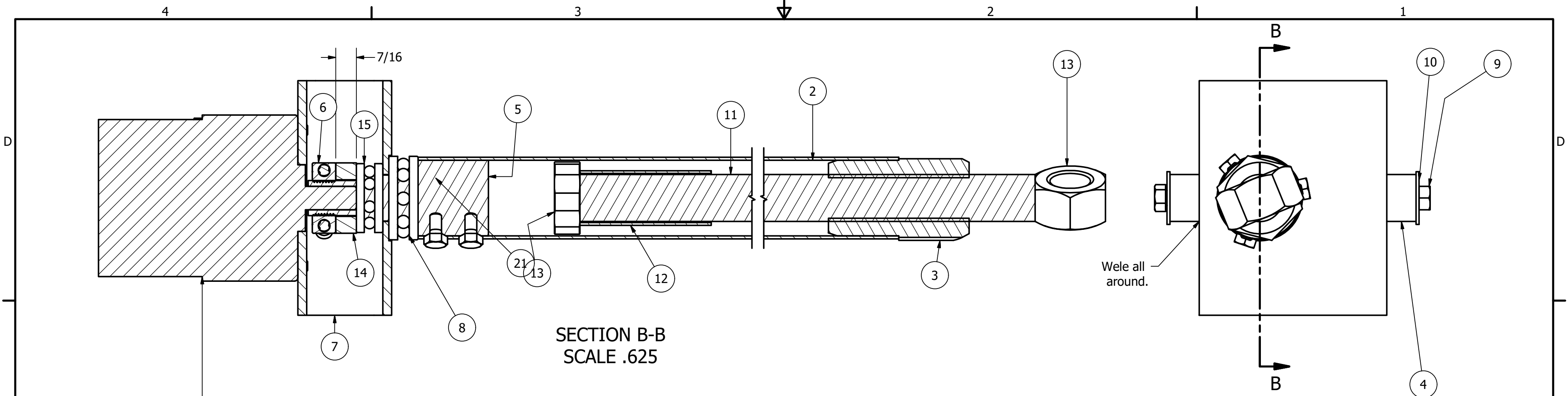


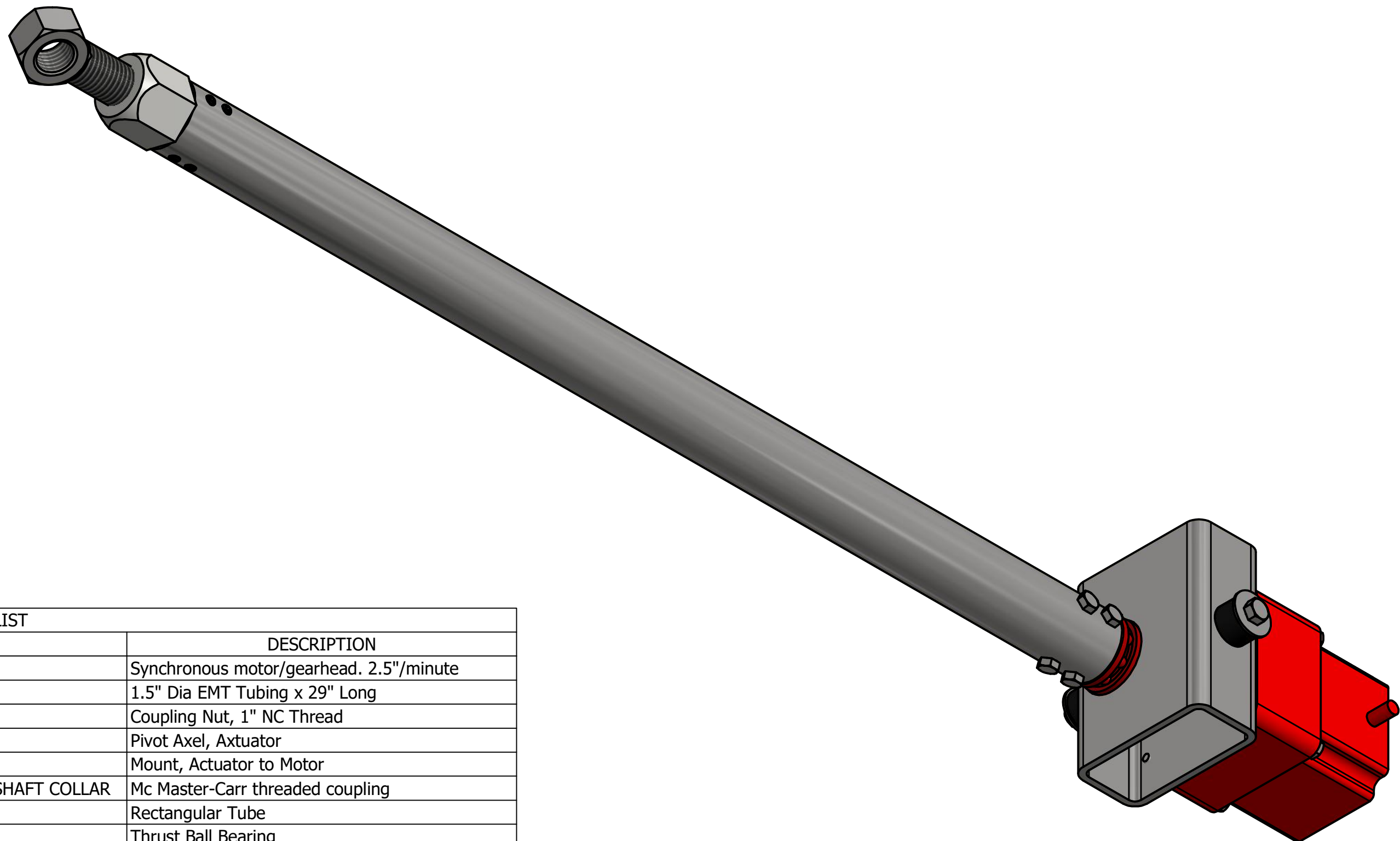
PARTS LIST			
ITEM	QTY	PART NUMBER	DESCRIPTION
1	1	OuterColumns_Pipe_Left	
2	1	OuterColumns_Pipe_Right	
3	1	MidColumn_Pipe	
4	2	PanelSupport_Split_Low_Pivot	
5	3	JackScrew_DirectDrive	
6	2	OutBoardClevisShaft	
7	1	Middle ClevisShaft	



DRAWN	8/3/2020	Watt-Tracker.com	
BILLS		TITLE	
CHECKED		Array, Low Pivot	
QA		SIZE	DWG NO
MFG		C	6KW_Assy_2Part_Low_Pivot
APPROVED		SCALE	REV
			SHEET 1 OF 7



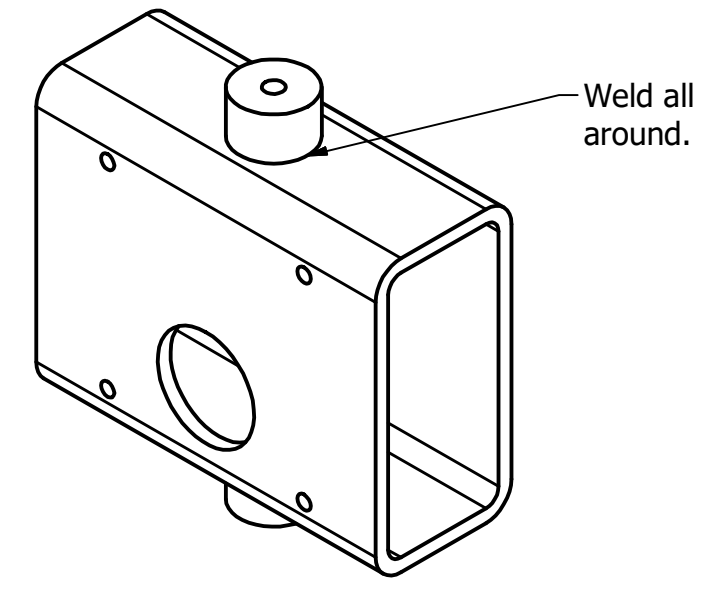
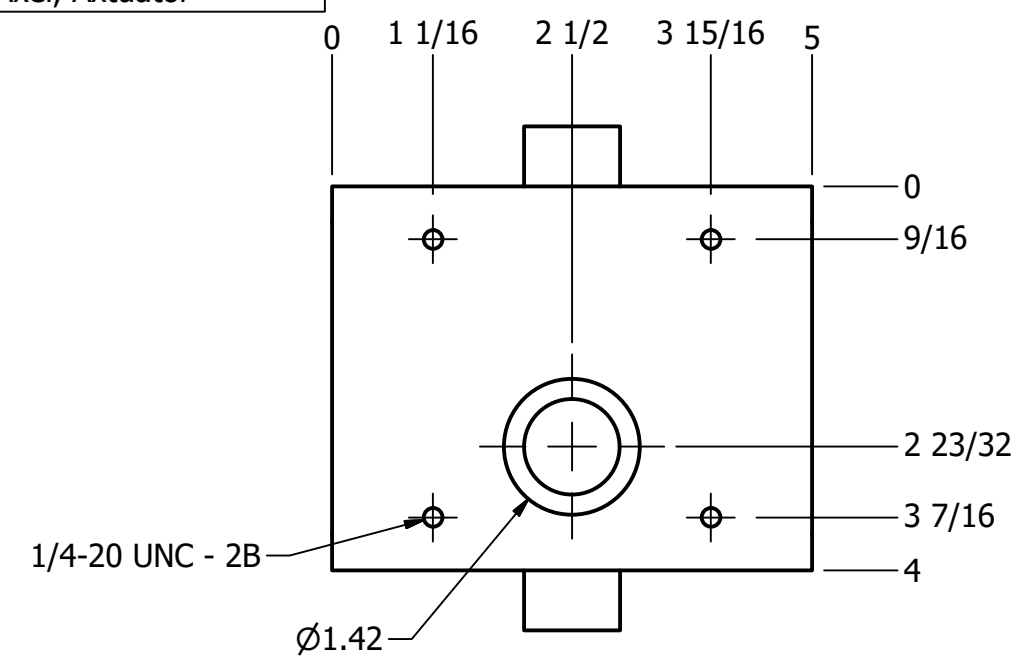
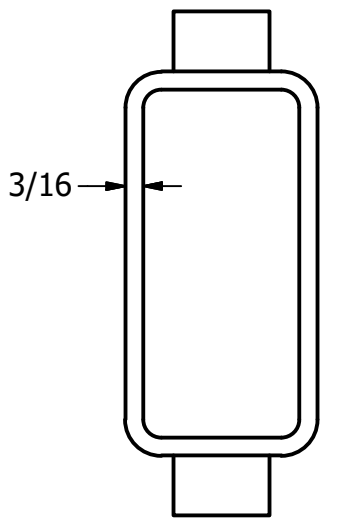
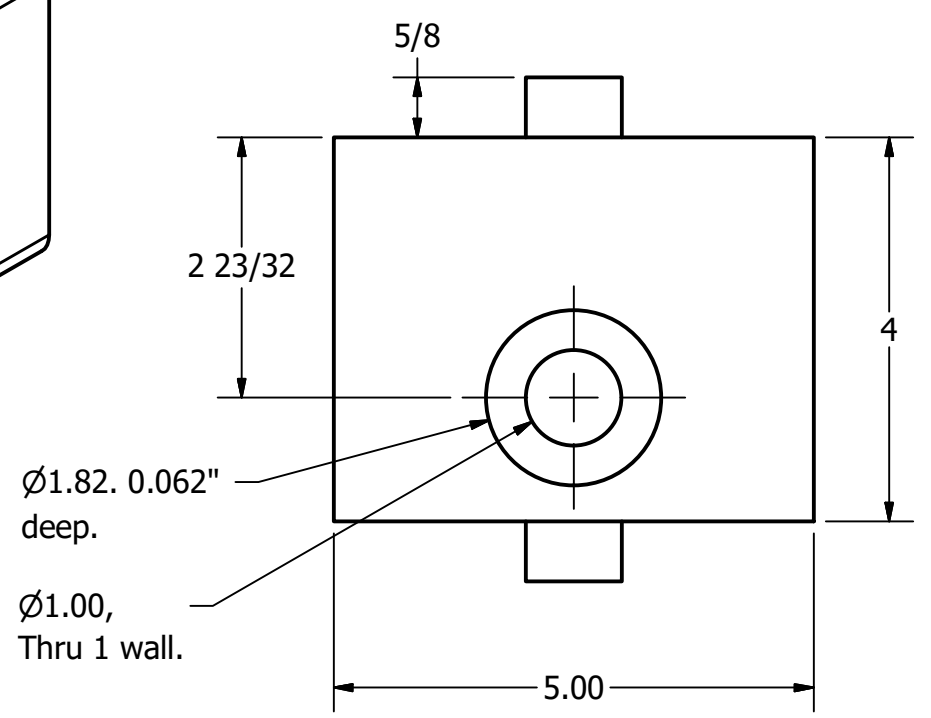
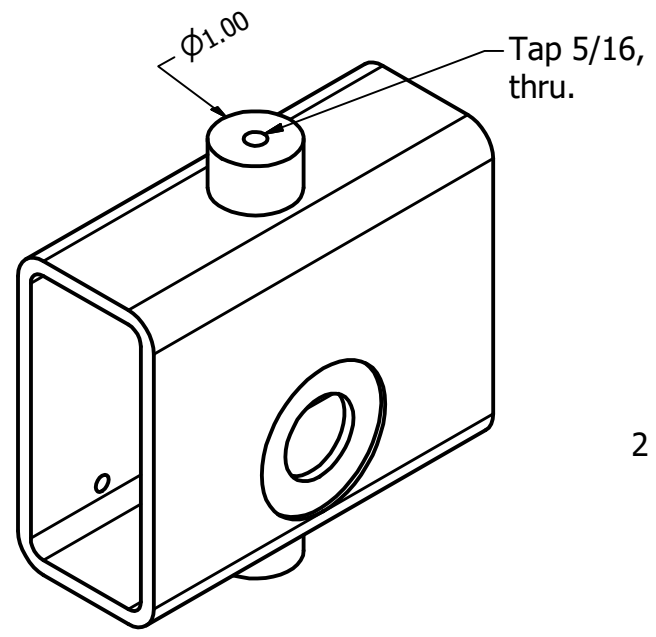
The purpose of the thrust bearings is to keep wind / axial loads off of the motor shaft.



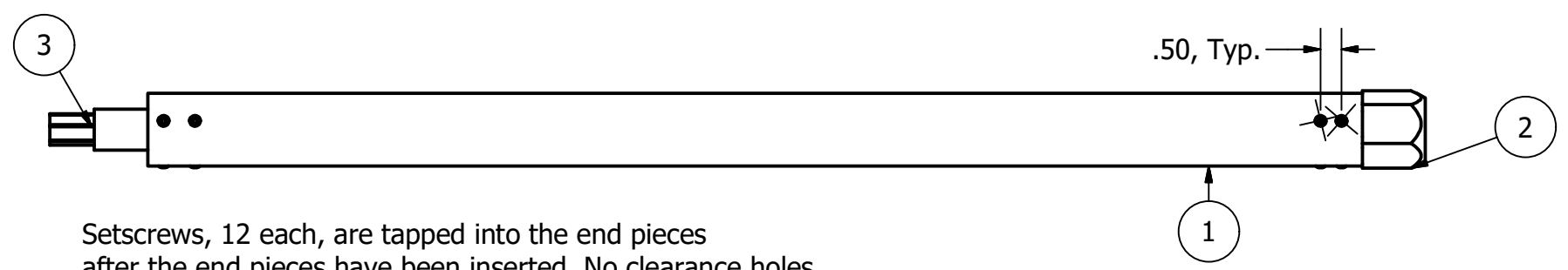
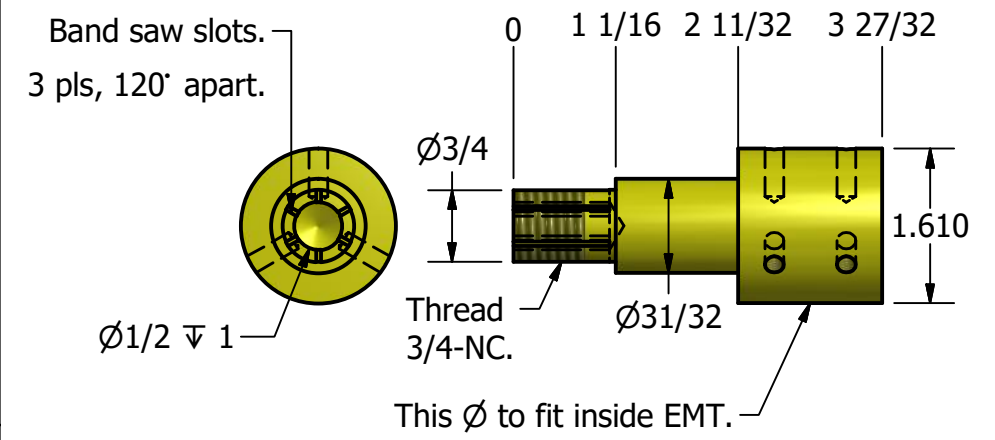
PARTS LIST			
ITEM	QTY	PART NUMBER	DESCRIPTION
1	1	SMK550A_5GN3p6KA	Synchronous motor/gearhead. 2.5"/minute
2	1	EMT_1P5	1.5" Dia EMT Tubing x 29" Long
3	1	McM90264A262	Coupling Nut, 1" NC Thread
4	2	Mount_Actuator	Pivot Axel, Axtuator
5	1	EMT_Insert_V1	Mount, Actuator to Motor
6	1	60705K380_THREADED-BORE TWO-PIECE CLAMP-ON SHAFT COLLAR	Mc Master-Carr threaded coupling
7	5.000 in	AISC - 4x2x3/16 - 5	Rectangular Tube
8	1	ANSI/AFBMA 23.2 TB - 1 x 1 25/32 x 5/8 - 16TB031	Thrust Ball Bearing
9	2	ANSI/ASME B18.2.1 - 5/16-18 UNC - 0.5	Hex Bolt - UNC (Regular Thread - Inch)
10	2	ANSI B18.22.1 - 5/16 - wide - Type B	Plain Washer (Inch)Type A and B
11	1	1_Allthread	1" All Thread. Actuator Rod, 29 " Long
12	1	StopTube_EMT1	EMT 1"
13	2	ANSI B18.2.2 - 1 - 8	Hex Nut, 1"-8 tpi
14	1	ThrustRing	Spacer, Thrust bearing
15	1	ANSI/AFBMA 23.2 TB - 3/4 x 1 15/32 x 9/16 - 12TB030	Thrust Ball Bearing
17	4	ANSI/ASME B18.2.1 - 1/4-20 UNC - 2.25	Hex Bolt - UNC (Regular Thread - Inch)
18	12	ANSI B18.3 - 1/4-20 UNC x 0.38	Hexagon Socket Set Screw - Flat Point
21	6	ANSI/ASME B18.2.1 - 1/4-20 UNC - 0.5	Hex Bolt - UNC (Regular Thread - Inch)

DRAWN	8/3/2020	Watt-Tracker.com	
BILLS CHECKED		TITLE	
QA		Actuator	
MFG		SIZE	DWG NO
APPROVED		C	6KW_Assy_2Part_Low_Pivqt
		SCALE	REV
			SHEET 2 OF 7

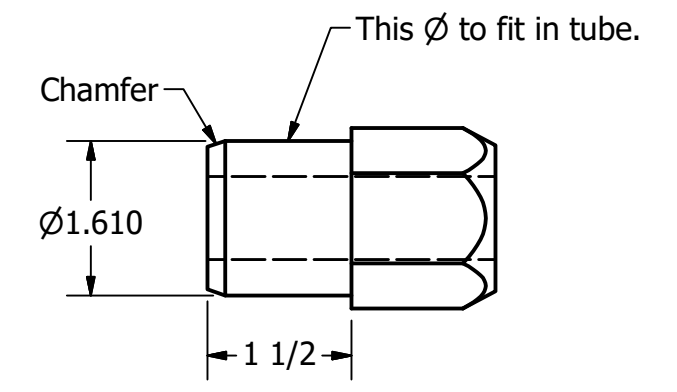
PARTS LIST			
ITEM	QTY	PART NUMBER	DESCRIPTION
1	5.000 in	AISC - 4x2x3/16 - 5	Rectangular Tube
2	2	Mount_Actuator	Pivot Axel, Axtuator



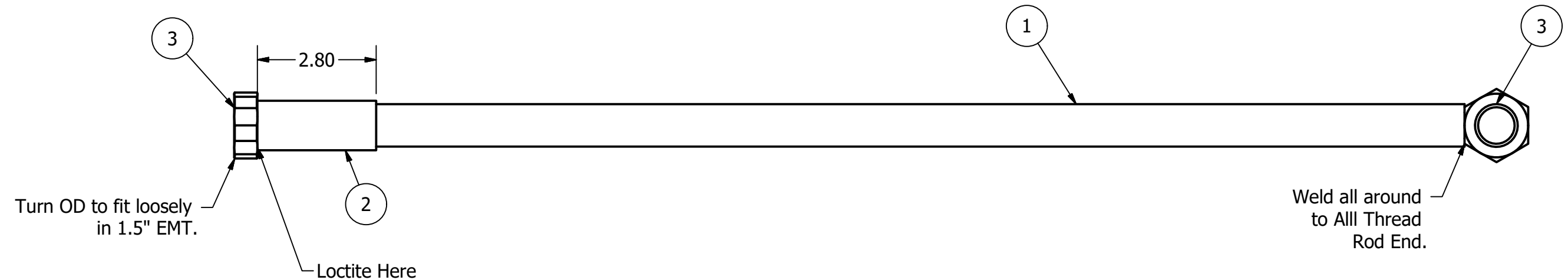
PARTS LIST			
ITEM	QTY	PART NUMBER	DESCRIPTION
1	1	EMT_1P5	1.5" Dia EMT Tubing x 29" Long
2	1	McM90264A262	Coupling Nut, 1" NC Thread
3	1	EMT_Insert_V1	Mount, Actuator to Motor
4	12	ANSI B18.3 - 1/4-20 UNC x 0.38	Hexagon Socket Set Screw - Flat Point



Setscrews, 12 each, are tapped into the end pieces after the end pieces have been inserted. No clearance holes.
120' apart. Set screws retain end pieces.
Place clocking marks on each end.

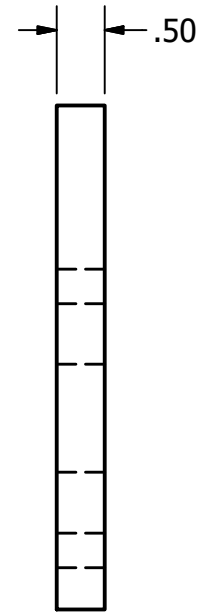
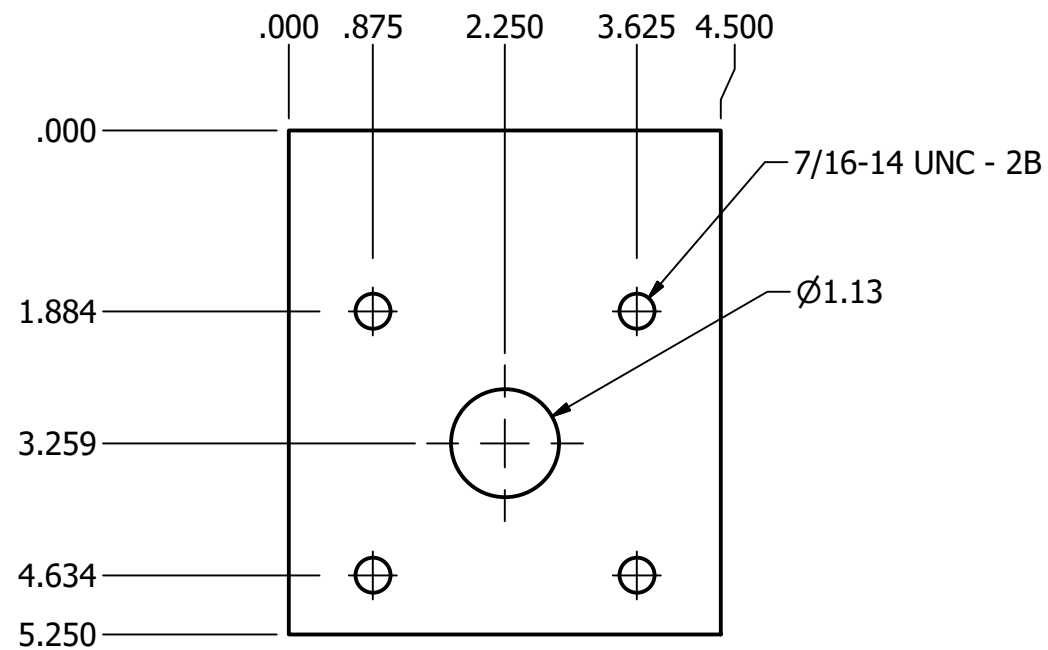
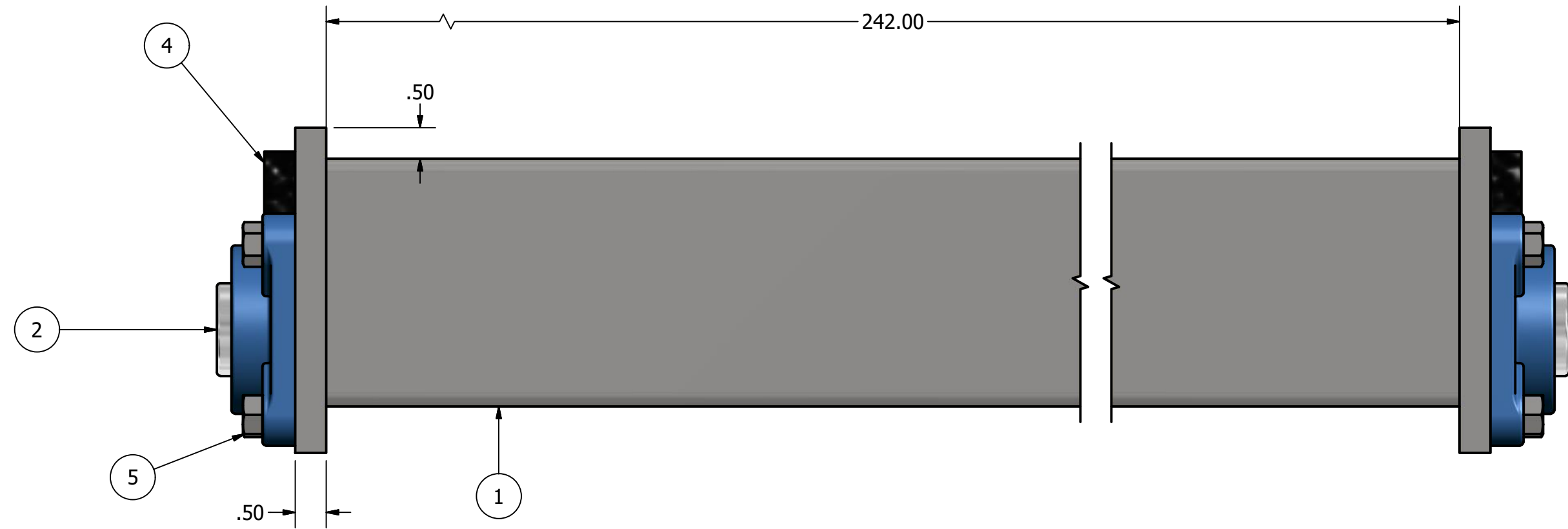
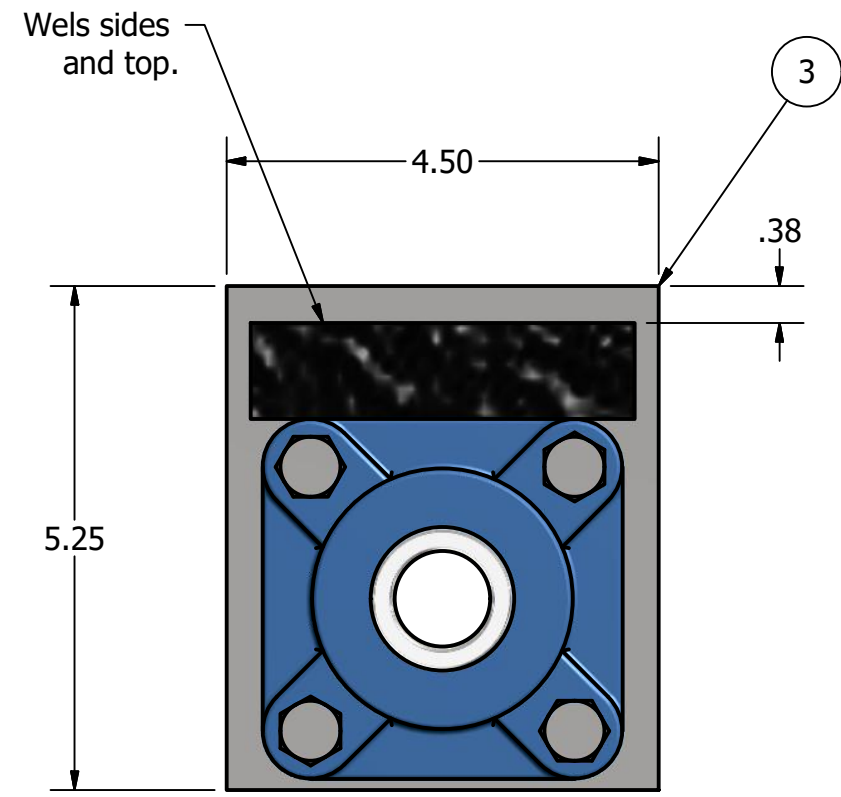


PARTS LIST			
ITEM	QTY	PART NUMBER	DESCRIPTION
1	1	1_Allthread	1" All Thread. Actuator Rod, 29" Long
2	1	StopTube_EMT1	EMT 1"
3	2	ANSI B18.2.2 - 1 - 8	1" NC Hex Nut and 1" NC Jam Nut

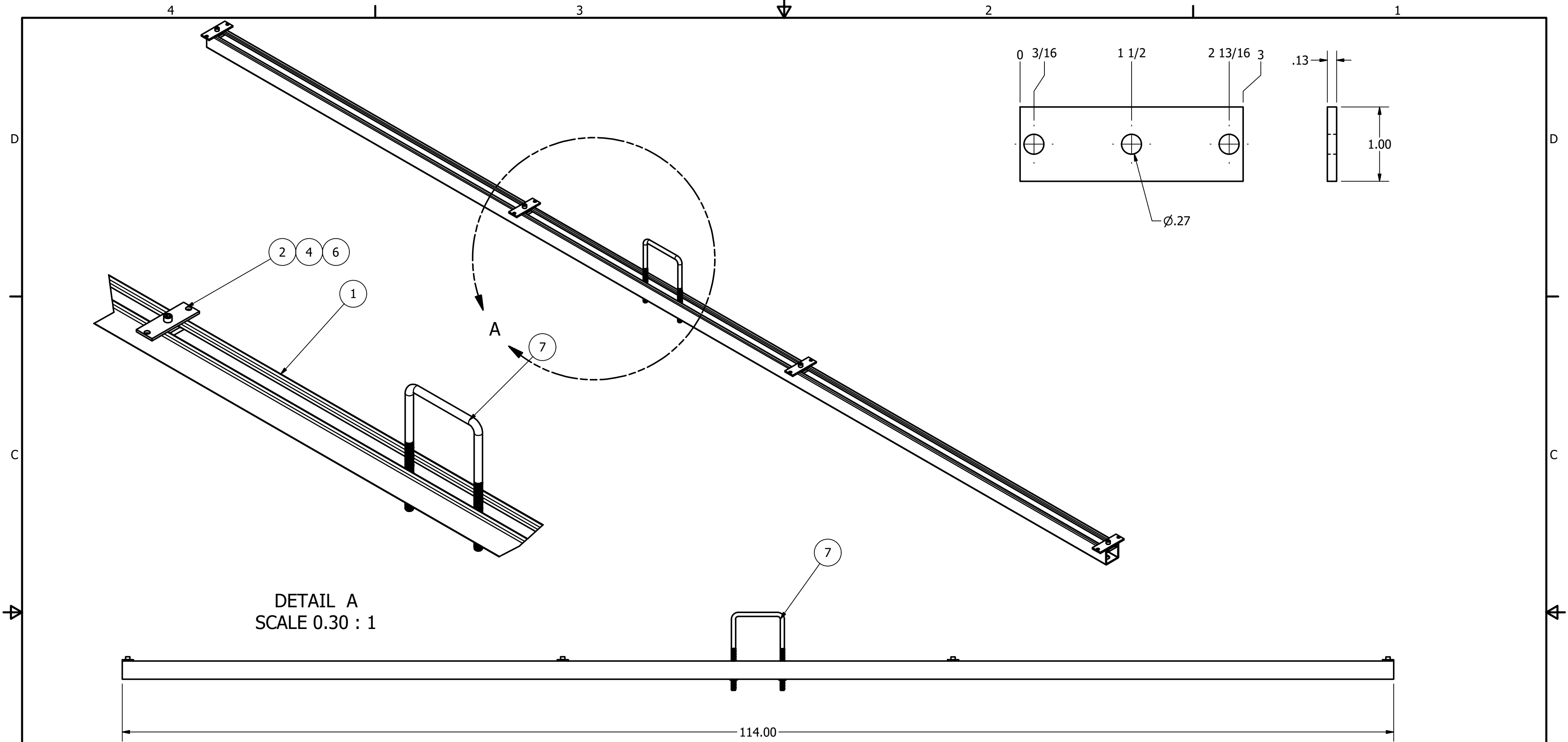


DRAWN	8/3/2020	Watt-Tracker.com	
BILLS		TITLE	
CHECKED		Actuator Parts	
QA		SIZE	DWG NO
MFG		C	6KW_Assy_2Part_Low_Pivdt
APPROVED		SCALE	REV
			SHEET 3 OF 7

PARTS LIST			
ITEM	QTY	PART NUMBER	DESCRIPTION
1	1	4_Beam	4" Square Tube x 3/16" Wall, Galvanized
2	2	R14-SF-16SM	Flange brg Sealmaster Série SF Ø1", 9752 #
3	2	BearingMount_LowPivot	
4	2	BraceBar	
5	8	ANSI/ASME B18.2.1 - 7/16-14 UNC - 1	Hex Bolt - UNC (Regular Thread - Inch)



DRAWN	8/3/2020	Watt-Tracker.com		
BILLS		TITLE		
CHECKED		Main Spar		
QA		SIZE	DWG NO	REV
MFG		C	6KW_Assy_2Part_Low_Pivqt	
APPROVED		SCALE	SHEET 4 OF 7	

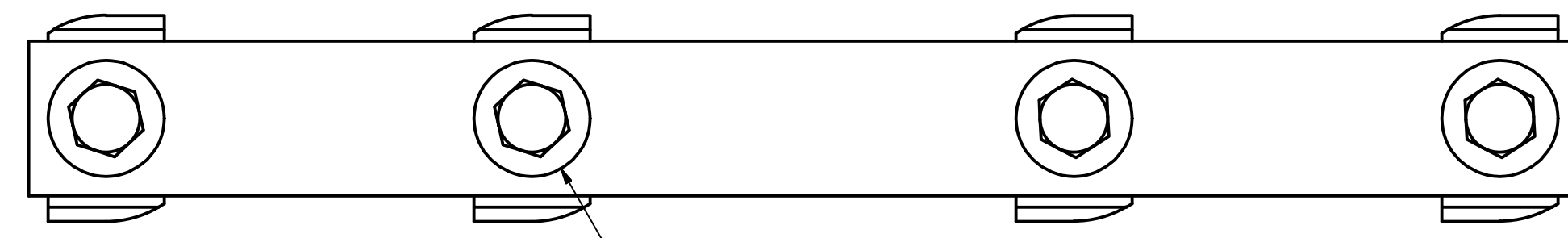
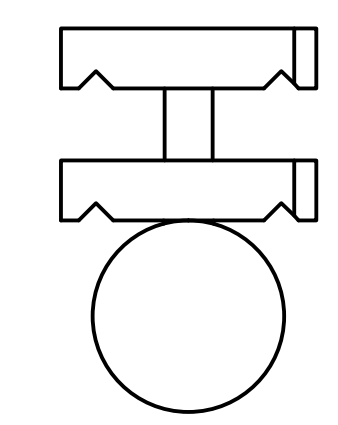
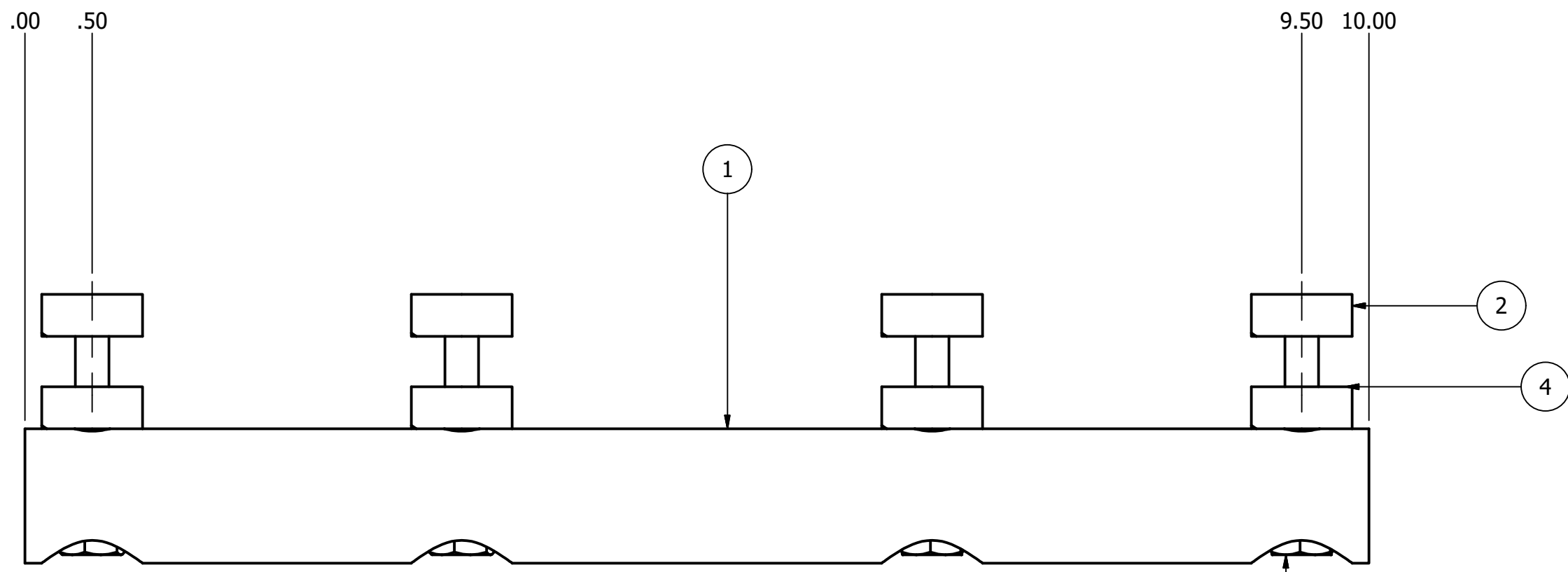
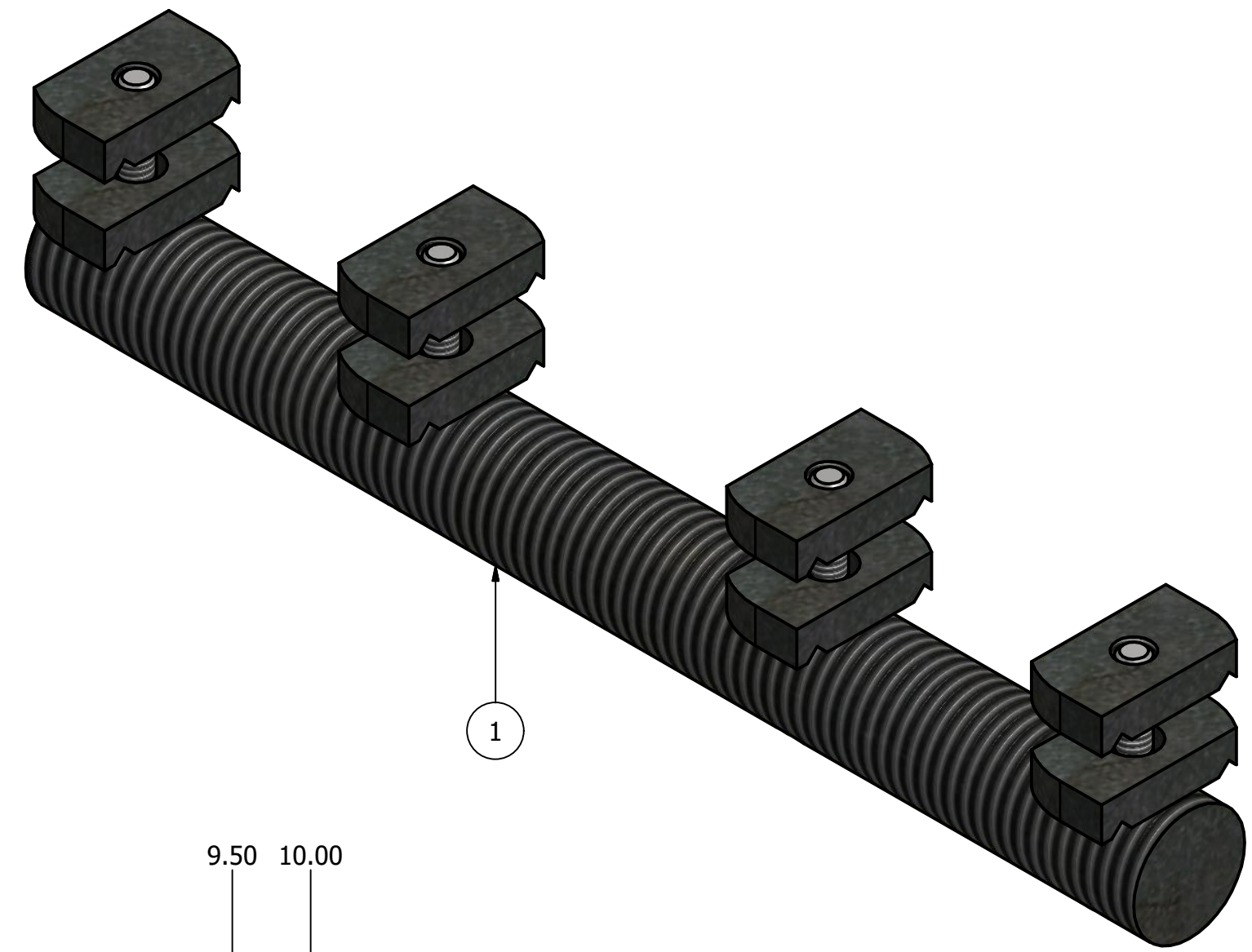


Make 7 per square tube.
When cutting unistrut, make sure one slot is midway.
This assures the U bolt will fit in existing slots.

PARTS LIST			
ITEM	QTY	PART NUMBER	DESCRIPTION
1	1	A-1200-HalfSlot	Framing Strut Square A-1200-HalfSlot
2	4	FB_PanelMount	Dwg Shown
4	4	Unistrut_P1006_1420	
6	4	ANSI B18.3 - 1/4 - 20 UNC - 3/4 HS HCS	Hexagon Socket Head Cap Screw
7	1	3060T760_SQ U-BOLT	Mc Masterr Carr

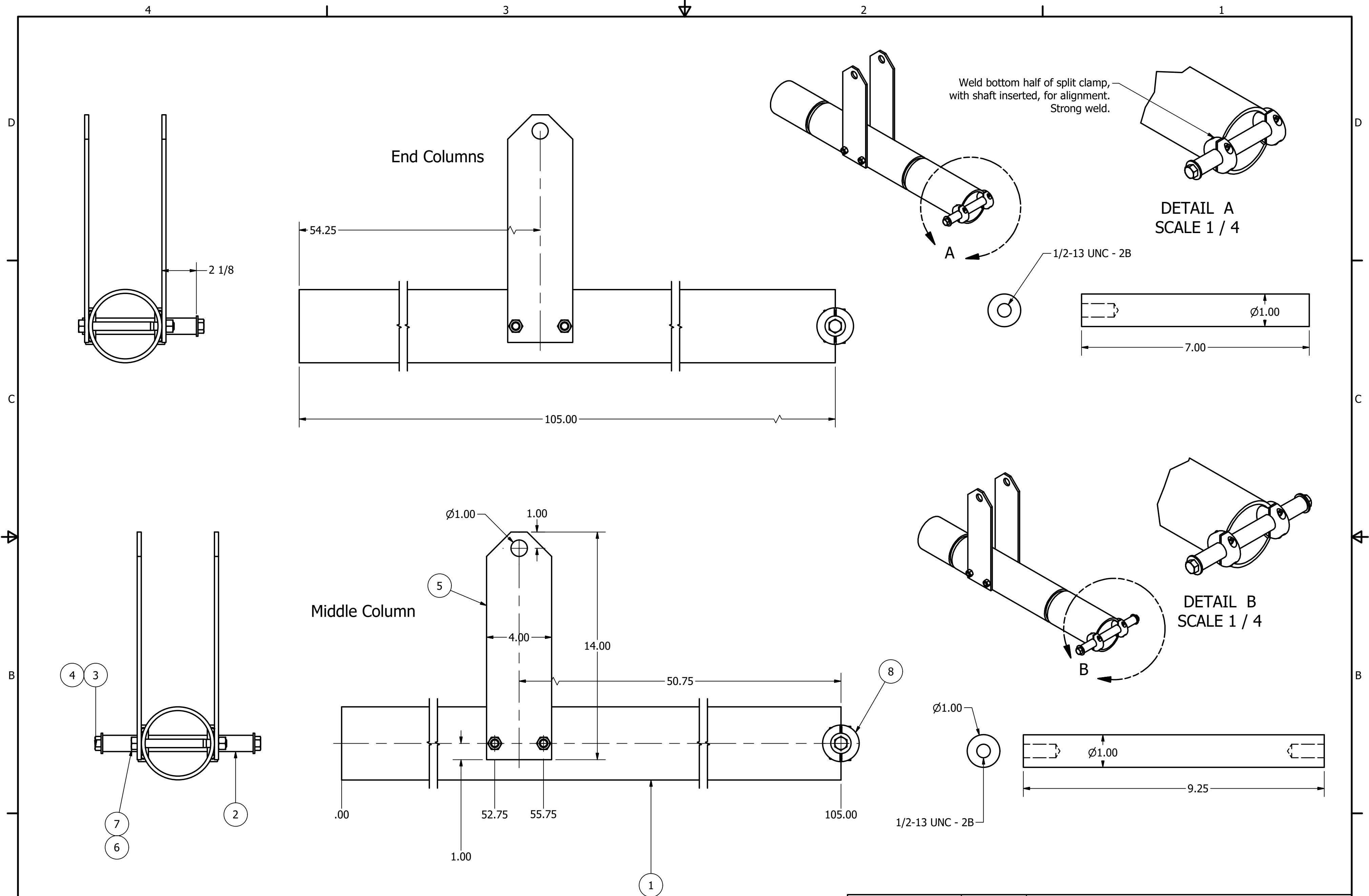
DRAWN	8/3/2020	Watt-Tracker.com		
BILLS		TITLE		
CHECKED		Panel Mounts		
QA		SIZE	DWG NO	REV
MFG		C	6KW_Assy_2Part_Low_Pivdt	
APPROVED		SCALE	SHEET 5 OF 7	

PARTS LIST			
ITEM	QTY	PART NUMBER	DESCRIPTION
1	1	Clevis_Shaft	1" NC All Thread
2	4	Unistrut_P1007	Unistrut Nut
3	4	ANSI/ASME B18.2.1 - 1/4-20 UNC - 1.75	Hex Bolt - UNC (Regular Thread - Inch)
4	4	Unistrut_P1007_DrilledOut	Unistrut Nut



Ø.27 THRU
 ⌊ Ø.75 ▽ .25

DRAWN	8/3/2020	Watt-Tracker.com		
BILLS		TITLE		
CHECKED		Mount,Actuator_Rod_End		
QA		SIZE	DWG NO	REV
MFG		C	6KW_Assy_2Part_Low_Pivdt	
APPROVED		SCALE	SHEET 6 OF 7	



PARTS LIST			
ITEM	QTY	PART NUMBER	DESCRIPTION
1	105.000 in	ANSI/AISC Rolled Steel - 4-105	Pipe Standard Weight
2	1	Axel_Pipe	
3	2	ANSI/ASME B18.2.1 - 1/2-13 UNC - 1.25	Hex Bolt - UNC (Regular Thread - Inch)
4	2	ANSI B18.22.1 - 1/2 - Regular - Type B	Plain Washer (Inch)Type A and B
5	2	ActuatorMount	
6	2	ANSI B18.2.2 - 1/2 - 13	Hex Nuts (Inch Series) Hex Nut
7	2	ANSI/ASME B18.2.1 - 1/2-13 UNC - 5.5	Hex Bolt - UNC (Regular Thread - Inch)
8	2	8386K110_EXTRA-GRIP TWO-PIECE CLAMP-ON SHAFT COLLAR	2 Piece Clamp on shaft collar- Mc Master-Carr

DRAWN	8/3/2020	Watt-Tracker.com	
BILLS CHECKED		TITLE	
QA		Columns	
MFG		SIZE	DWG NO
APPROVED		C	6KW_Assy_2Part_Low_Pivdt
		SCALE	REV
			SHEET 7 OF 7